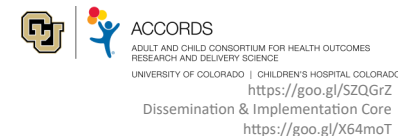




OVERVIEW: IMPACT (IMPlEmentation to Achieve Clinical Transformation) is a 2-year postdoctoral research career development (K12) program based at the University of Colorado, School of Medicine and supported by a grant from the National Heart, Lung, and Blood Institute (NHLBI). Mentors lead scholars to independence in T4 population-based (implementation science) translational work, merging clinical, public health research and practice in cardiovascular, pulmonary, hematologic, and sleep disorders. The program offers innovative, didactic training and mentored research experience in diverse, cutting-edge health care systems.



PROGRAM FEATURES

- Housed in the transdisciplinary Adult and Child Consortium for Health Outcomes Research and Delivery Science (ACCORDS) at the University of Colorado, School of Medicine (<https://goo.gl/X64moT>)
- Emphasis on the application of *theoretical frameworks* for dissemination and implementation (D&I) research, including RE-AIM, the Dynamic Sustainability Framework and the Evidence Integration Triangle
- *Embedded research* opportunities in a wide variety of clinical settings:
 - A community-based primary research care network
 - A leading safety net healthcare system serving a disadvantaged patient population
 - A Veterans Administration medical center and QUERI program
 - Inpatient and outpatient settings affiliated with a major pediatric hospital
 - A large, progressive managed care organization
- A faculty with unique strengths in *mixed methods* (quantitative/qualitative) evaluation, *pragmatic research* measures, research across the life-span, shared decision-making, community engagement, *mHealth solutions*

EXAMPLES OF RELEVANT, PRAGMATIC RESEARCH INCLUDE

- Implementation of clinical-community collaborations to prevent childhood and adult illnesses
- Implementation of evidence-based behavioral interventions for chronic illness (hypertension, diabetes, heart failure, etc.) self management with socioeconomically diverse populations
- eHealth interventions to promote behavior change of patients and health care teams
- Patient-centered system re-design to promote high quality HLBS care
- Interactive technology for training in T4 science

LEADERSHIP

- Program Co-Directors: Russell Glasgow, PhD (behavioral science; T4 evaluation) and Edward Havranek, MD (cardiology, health equity)
- Additional Primary Mentors: Allison Kempe, MD, MPH (pediatrics, vaccination and public health outreach), Elaine Morrato, DrPH (public health, marketing, CTSA), Don Nease, MD (primary care, research networks, community engagement, CTSA), John Steiner, MD, MPH (health equity, medication adherence, EHR data systems)
- Secondary mentors in (a) relevant heart, lung, blood, and sleep clinical content matter, (b) relevant health system settings, and (c) relevant research methodology including informatics, statistics, geriatrics, and qualitative methods (<https://goo.gl/sxHHLT>)

ELIGIBILITY

- MD or PhD (or equivalent) in behavioral science, public health, nursing, pharmacy or related health sciences
- Able to devote 75% or greater FTE to research and career development
- US citizen or non-citizen national, or permanent resident at time of application
- Graduate level training in statistics, research methodology, and health services research preferred
- Interest in research career in learning health systems and pragmatic research methods preferred

HOW TO APPLY

- Follow the link to apply: <https://goo.gl/MwUsYn>
- For general questions: rebecca.speer@ucdenver.edu